

FRANKLIN COUNTY ENGINEER'S OFFICE CONTRACTOR OPEN HOUSE

Cornell R. Robertson, P.E., P.S.
Franklin County Engineer
www.franklincountyengineer.org
Facebook: @franklincountyengineer



Franklin County Engineer's Office Contractor Open House

Overview:

1. Welcome
2. Introduction
3. Diversity & Inclusion
4. Project Details
5. Questions & Answers
6. Closing Remarks



Introduction



Diversity & Inclusion





SUPPLIER DIVERSITY

Agency Goals

- Create a DBE database.
- Increase DBE participation.
- Encourage networking opportunities between prime and subs.
- Explore the implementation of a FCEO certification program for local projects.



2020 Construction Projects



Bridge Projects

- Dublin-Granville Rd. over Rocky Fork
- Hayden Run Rd. over Scioto River
- Hayden Run Rd. under I-270
- Mann Rd. over Tributary to Rocky Fork Creek
- Olentangy River Rd. Storm Sewer
- Precast Fabrication Project
- Trabue Rd. over NSRR





DUBLIN-GRANVILLE ROAD 12.90 OVER ROCKY FORK CREEK

Slab Replacement & Deck Widening

- Located in northeast Franklin County between Hamilton Road and Harlem Road in the City of Columbus and the City of New Albany
- Engineer's Estimate: \$1,200,000
- Project Advertisement: January 2020
- Construction Start Date: Spring of 2020
- Project Duration: 120 days
- Maintenance of Traffic: Full closure and detour



HAYDEN RUN ROAD 6.74 OVER SCIOTO RIVER

Bridge Deck Waterproofing & Parapet Rehabilitation

- Located in northwest Franklin County between Riverside Drive and Dublin Road
- Engineer's Estimate: \$750,000
- Project Advertisement: Summer of 2020
- Construction Start Date: Fall of 2020
- Project Duration: 45 days
- Maintenance of Traffic: Partial closure with lane restrictions





HAYDEN RUN ROAD UNDER I-270

Shared Use Path & Structure Rehab

- Located in northwest Franklin County between Britton Parkway and Edwards Farms Road in the City of Hilliard and the City of Columbus
- Engineer's Estimate: \$874,000
- Project Advertisement: January 2020
- Construction Start Date: Winter of 2020
- Project Duration: 90 days
- Maintenance of Traffic: Partial closure with lane restrictions



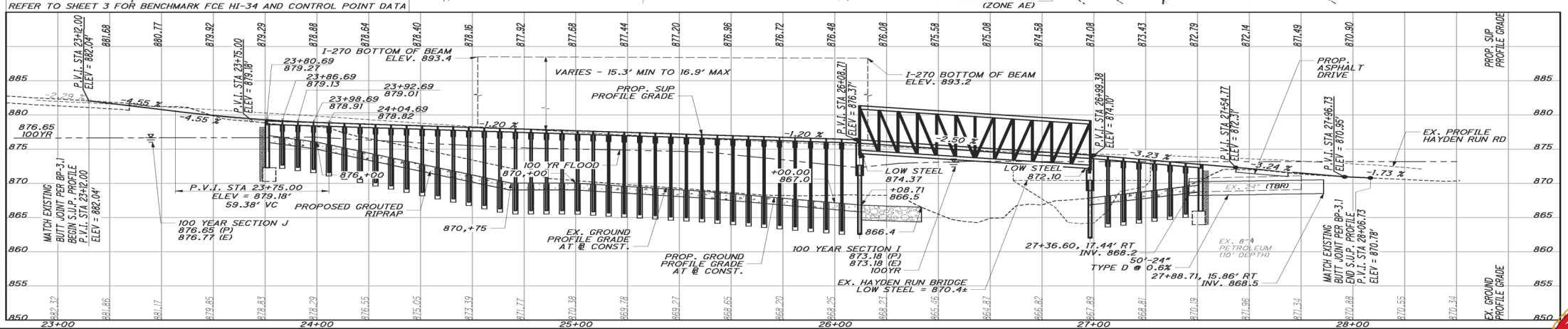
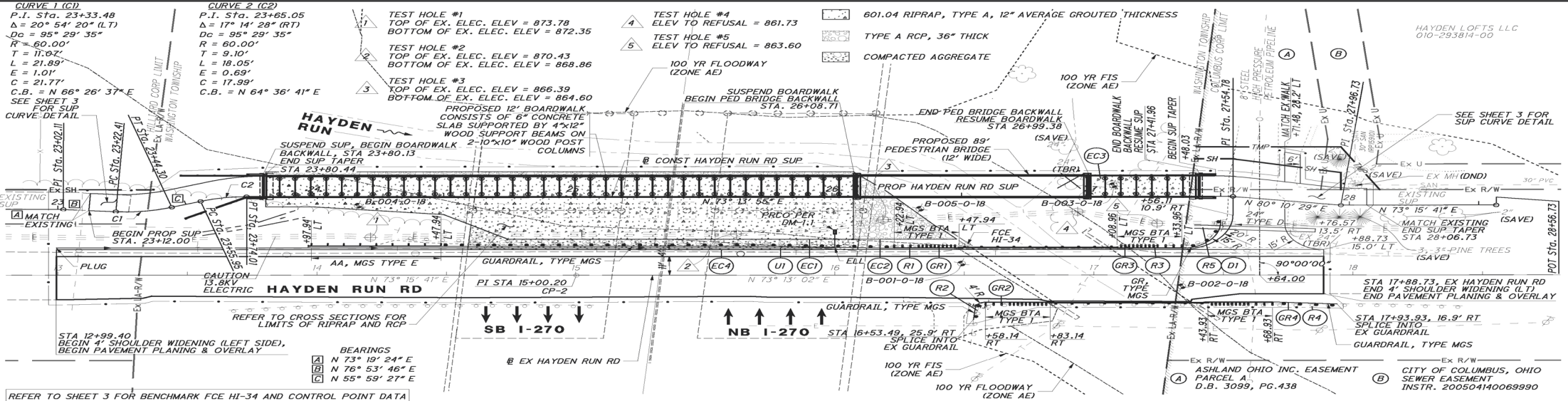


CURVE 1 (C1)
 P.I. STA. 23+33.48
 Δ = 20° 54' 20" (L T)
 Dc = 95' 29' 35"
 R = 60.00'
 T = 11.02'
 L = 21.89'
 E = 1.01'
 C = 21.77'
 C.B. = N 66° 26' 37" E
 SEE SHEET 3 FOR SUP CURVE-DETAIL

CURVE 2 (C2)
 P.I. STA. 23+65.05
 Δ = 17° 14' 28" (R T)
 Dc = 95' 29' 35"
 R = 60.00'
 T = 9.10'
 L = 18.05'
 E = 0.69'
 C = 17.99'
 C.B. = N 64° 36' 41" E

- TEST HOLE #1
TOP OF EX. ELEC. ELEV = 873.78
BOTTOM OF EX. ELEC. ELEV = 872.35
- TEST HOLE #2
TOP OF EX. ELEC. ELEV = 870.43
BOTTOM OF EX. ELEC. ELEV = 868.86
- TEST HOLE #3
TOP OF EX. ELEC. ELEV = 866.39
BOTTOM OF EX. ELEC. ELEV = 864.60
- TEST HOLE #4
ELEV TO REFUSAL = 861.73
- TEST HOLE #5
ELEV TO REFUSAL = 863.60

- 601.04 RIPRAP, TYPE A, 12" AVERAGE GROUTED THICKNESS
- TYPE A RCP, 36" THICK
- COMPACTED AGGREGATE



VERTICAL SCALE IN FEET
 HORIZONTAL SCALE IN FEET

**HAYDEN RUN RD - PEDESTRIAN BRIDGE
 PLAN AND PROFILE**

HAYDEN RUN CENTRAL
 OHIO GREENWAYS TRAIL



A:\155330-HaydenRun-CD.Dwg (Work) - Press:04/15/2024 10:45:35 AM - Design: 2024-10-24 10:45:35 AM - jason.brown

MANN ROAD 0.50 OVER TRIBUTARY TO ROCKY FORK CREEK

Culvert Replacement

- Located in northeast Franklin County between Havens Road and Havens Corners Road in Jefferson Township
- Engineer's Estimate: \$400,000
- Project Advertisement: Spring of 2020
- Construction Start Date: Summer of 2020
- Project Duration: 60 days
- Maintenance of Traffic: Full closure and detour





OLENTANGY RIVER ROAD STORM SEWER IMPROVEMENT

Storm Sewer Improvement

- Located in northwest Franklin County between Crestway Drive and Caruthers Drive
- Engineer's Estimate: \$265,000
- Project Advertisement: February 2020
- Construction Start Date: June 2020
- Project Duration: 60 days
- Maintenance of Traffic: Two-way, one-lane traffic



PRECAST FABRICATION PROJECT

Precast Materials Purchase

- Fabrication of 320' of 10' x 10' and 12' x 6' box culvert sections
- Estimated purchase amount: \$190,000
- Project Bid Date: December 2019
- Fabrication planned in winter of 2020
 - Borror Road 0.11 over Tributary of Strader Ditch
 - Hoover Road 2.04 over Tributary of Grant Run
 - Ridpath Road 0.69 over Stanford Smith Ditch
 - Schleppe Road 0.97 over Tributary to Rocky Fork Creek
- Interested fabricators must complete the registration process with BidExpress and have a Digital ID



An aerial photograph showing a multi-lane highway bridge crossing over a set of railroad tracks. A long freight train is visible on the tracks, consisting of several black tanker cars and white boxcars. The surrounding area appears to be a rural or industrial site with some snow on the ground.

TRABUE ROAD 7.85 OVER NORFOLK SOUTHERN RR

Deck Widening & Superstructure
Replacement

- Located in western Franklin County between Walcutt Road and I-270
- Engineer's Estimate: \$3,700,000
- Project Advertisement: November 19, 2019
- Construction Start Date: March of 2020
- Project Duration: 150 days
- Maintenance of Traffic: Full closure and detour





Resurfacing & Special Projects

- Franklin County Resurfacing Program
- Township Resurfacing Program
- Franklin County Maintenance Program
- 50 E. Mound Parking Expansion
- Guardrail Maintenance Program



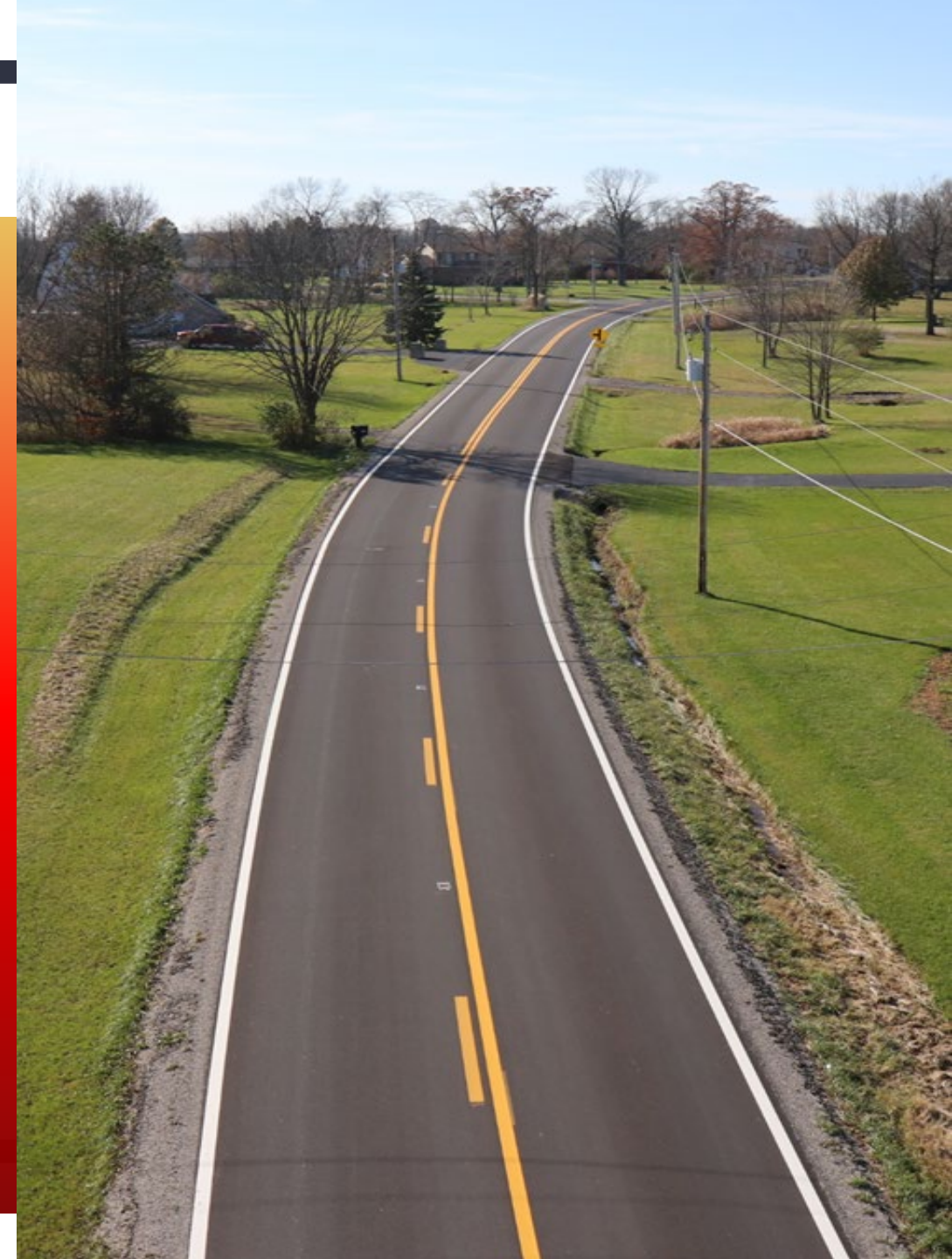
2020 RESURFACING PROGRAM

A s p h a l t R e s u r f a c i n g

- Franklin County Program
 - Engineer's Estimate: \$4,500,000
 - Project Advertisement in March 2020

- Franklin County Township Program
 - Engineer's Estimate: \$2,000,000
 - Project Advertisement in May 2020

- Franklin County Maintenance Program
 - Engineer's Estimate: \$500,000
 - Project Advertisement in May 2020





50 E. MOUND STREET PARKING LOT

P a r k i n g L o t E x p a n s i o n

- Located in downtown Columbus between S. High Street and Third Street
- Engineer's Estimate: \$500,000
- Project Advertisement: Spring of 2020
- Construction Start Date: May 2020
- Maintenance of Traffic: Traffic maintained



GUARDRAIL MAINTENANCE PROGRAM

Guardrail Repair Contract

- Multiple locations throughout Franklin County
- Engineer's Estimate: \$250,000
- Project Advertisement: April 2020
- Construction Start Date: Summer of 2020
- Project Duration: 2020 and 2021
- Maintenance of Traffic: Traffic maintained



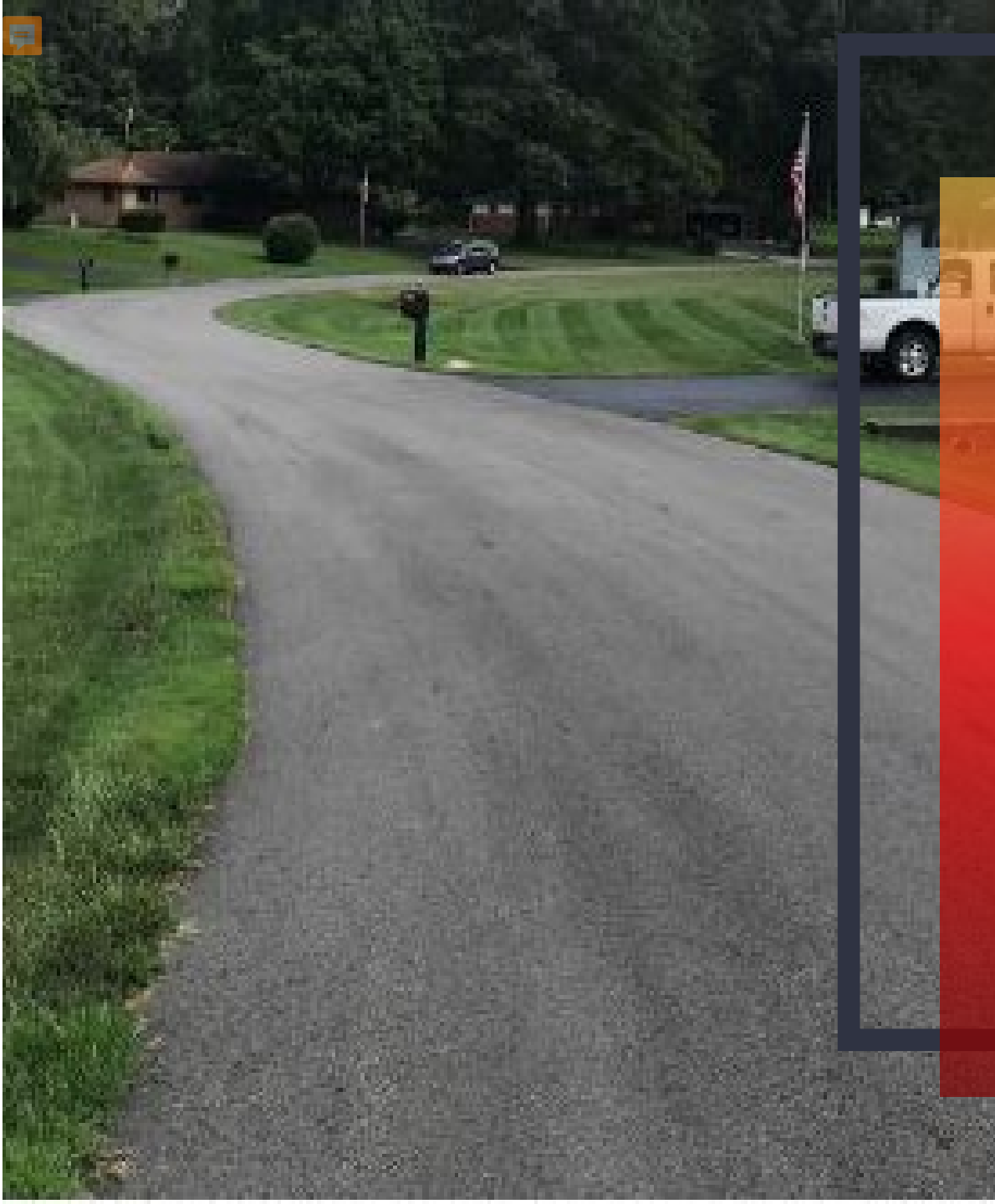
Drainage Projects

- Clark State Road & Longstreth Park Place
- Cook Tri-County Ditch
- General Drainage Investigation & Repair Services
- Kahler Ditch / Cabbage Road Culvert
- Kropp Road Drainage Outlet Improvements
- Murnan Road Drainage Improvements



Cornell R. Robertson, P.E., P.S.
FRANKLIN COUNTY ENGINEER
FRANKLIN COUNTY DRAINAGE ENGINEER





CLARK STATE ROAD AND LONGSTRETH PARK PLACE

D r a i n a g e I m p r o v e m e n t

- Located in northeast Franklin County in Jefferson Township
- Engineer's Estimate: \$129,000
- Project Advertisement: August 2020
- Construction Start Date: Fall of 2020
- Project Duration: 30 days
- Maintenance of Traffic: Traffic maintained



Cornell R. Robertson, P.E., P.S.
FRANKLIN COUNTY ENGINEER
FRANKLIN COUNTY DRAINAGE ENGINEER



Clark State Road and Longstreth Park Place



Cornell R. Robertson, P.E., P.S.
FRANKLIN COUNTY ENGINEER
FRANKLIN COUNTY DRAINAGE ENGINEER



COOK TRI-COUNTY DITCH

Ditch Cleaning and Pipe Installation

- Located in northeast Franklin County between Tippet Road and Fancher Road
- Engineer's Estimate: \$400,000
- Project Advertisement: June 2020
- Construction Start Date: Fall of 2020
- Project Duration: 90 days
- Traffic Maintained: One-lane, two-way during construction of two road crossings

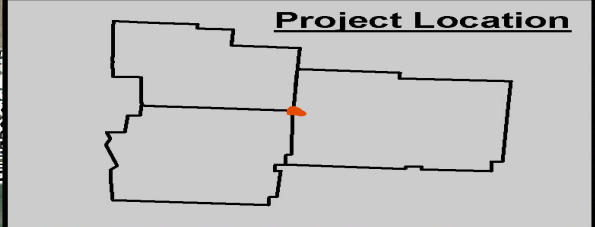
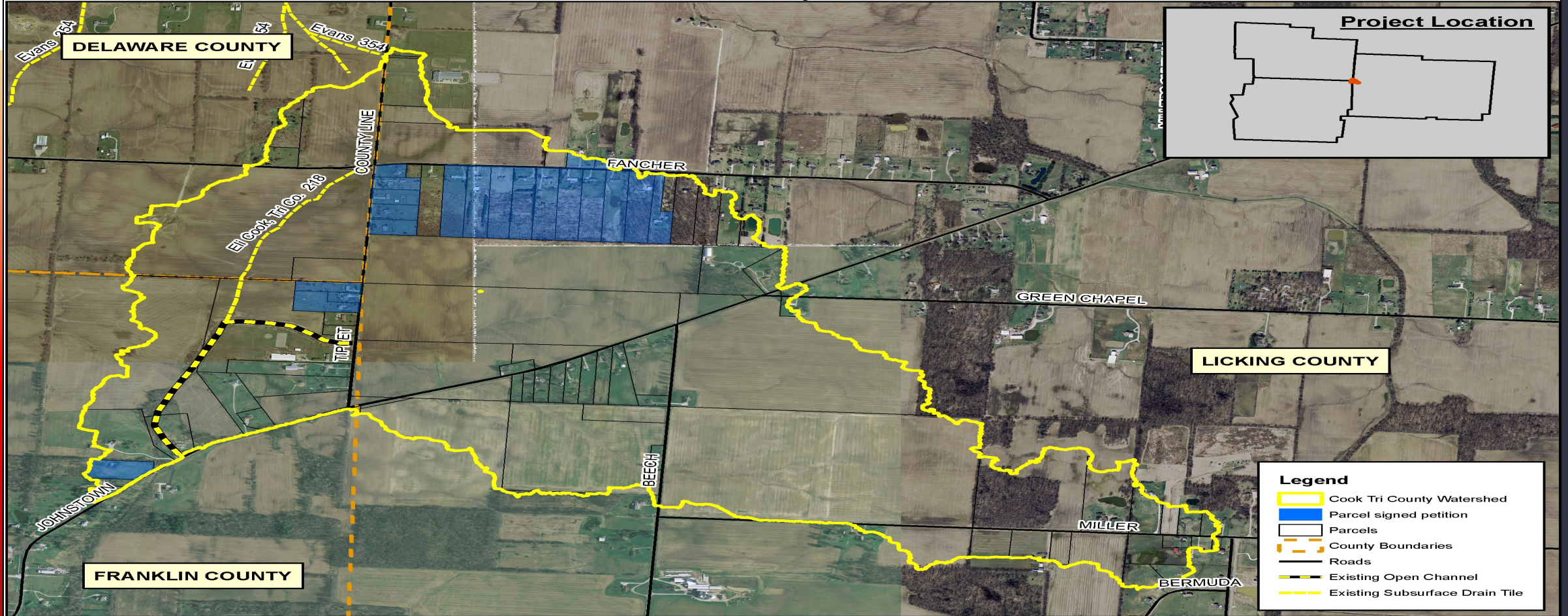


Cornell R. Robertson, P.E., P.S.
FRANKLIN COUNTY ENGINEER
FRANKLIN COUNTY DRAINAGE ENGINEER



2/20/2019

Cook Tri-County Watershed



Legend

- Cook Tri County Watershed
- Parcel signed petition
- Parcels
- County Boundaries
- Roads
- Existing Open Channel
- Existing Subsurface Drain Tile



1,000 500 0 1,000 Feet



Cornell R. Robertson, P.E., P.S.
FRANKLIN COUNTY ENGINEER
FRANKLIN COUNTY DRAINAGE ENGINEER





GENERAL DRAINAGE INVESTIGATION & REPAIR SERVICES

D r a i n a g e I m p r o v e m e n t

- Multiple locations throughout Franklin County
- Engineer's Estimate: \$1,000,000
- Project Advertisement: April 2020
- Project Duration: 2020 & 2021
- Maintenance of Traffic: Project dependent



Cornell R. Robertson, P.E., P.S.
FRANKLIN COUNTY ENGINEER
FRANKLIN COUNTY DRAINAGE ENGINEER



KAHLER DITCH / CUBBAGE ROAD CULVERT

Drainage Improvement

- Located in northeast Franklin County between Walnut Street and Cubbage Road in Blendon Township
- Engineer's Estimate: \$620,000
- Project Advertisement: December 2019
- Construction Start Date: February 2020
- Project duration: 90 days
- Traffic Maintained: One-lane, two-way during construction of one road crossing



Cornell R. Robertson, P.E., P.S.
FRANKLIN COUNTY ENGINEER
FRANKLIN COUNTY DRAINAGE ENGINEER



Kahler Ditch



Legend

- Red arrow: Structural Failure
- Orange arrow: Poor Condition
- Yellow arrow: Average Condition
- Green arrow: Good Condition
- Black arrow: New Structure
- Black line: Unchecked



Cornell R. Robertson, P.E., P.S.
FRANKLIN COUNTY ENGINEER
FRANKLIN COUNTY DRAINAGE ENGINEER





KROPP ROAD DRAINAGE OUTLET IMPROVEMENTS

D r a i n a g e I m p r o v e m e n t

- Located in southwest Franklin County between Rolling Hills Lane and Norton Road
- Engineer's Estimate: \$1,200,000
- Project Advertisement: November 2020
- Construction Start Date: Winter of 2021
- Project duration: 120 days
- Maintenance of Traffic: Residential access maintained



Cornell R. Robertson, P.E., P.S.
FRANKLIN COUNTY ENGINEER
FRANKLIN COUNTY DRAINAGE ENGINEER



Kropp Road Drainage Outlet



Legend

- Structural Failure
- Poor Condition
- Average Condition
- Good Condition
- New Structure
- Unchecked



Cornell R. Robertson, P.E., P.S.
 FRANKLIN COUNTY ENGINEER
 FRANKLIN COUNTY DRAINAGE ENGINEER



MURNAN ROAD DRAINAGE IMPROVEMENTS

Drainage Improvement

- Located in western Franklin County near Kuhlwein Road in Prairie Township
- Engineer's Estimate: \$800,000
- Project Advertisement: August 2020
- Construction Start Date: Fall of 2020
- Project duration: 60 days
- Maintenance of Traffic: Traffic maintained



Cornell R. Robertson, P.E., P.S.
FRANKLIN COUNTY ENGINEER
FRANKLIN COUNTY DRAINAGE ENGINEER



Murnan Road



Cornell R. Robertson, P.E., P.S.
FRANKLIN COUNTY ENGINEER
FRANKLIN COUNTY DRAINAGE ENGINEER



Highway Projects

- Alum Creek Drive at Rohr Road
- Alum Creek Drive CVE
- Eureka, Valley View, Highland, Harper
- Havenwood Improvement (Franklin Twp.)
- Madison Township Firehouse Parking Lot
- Reynoldsburg-New Albany at Clark State
 - Site Clearing Contract
 - Construction Contract
- Sheriff Facility Test Track





ALUM CREEK DRIVE AT ROHR ROAD

I n t e r s e c t i o n I m p r o v e m e n t

- Between Toy Road and Spiegel Drive in the City of Columbus and the City of Groveport
- Engineer's Estimate \$3,700,000
- Project Advertisement: March 2020
- Construction Start Date: May 2020
- Project duration: 120 days
- Maintenance of Traffic: Traffic maintained



HAVENWOOD IMPROVEMENT

R o a d w a y I m p r o v e m e n t

- Located in western Franklin County in Franklin Township
- Engineer's Estimate \$2,100,000
- Project Advertisement: January 2020
- Construction Start Date: March 2020
- Project duration: 80 days
- Maintenance of Traffic: One direction during part-width construction





MADISON TOWNSHIP FIREHOUSE PARKING LOT

Firehouse Parking Lot Improvement

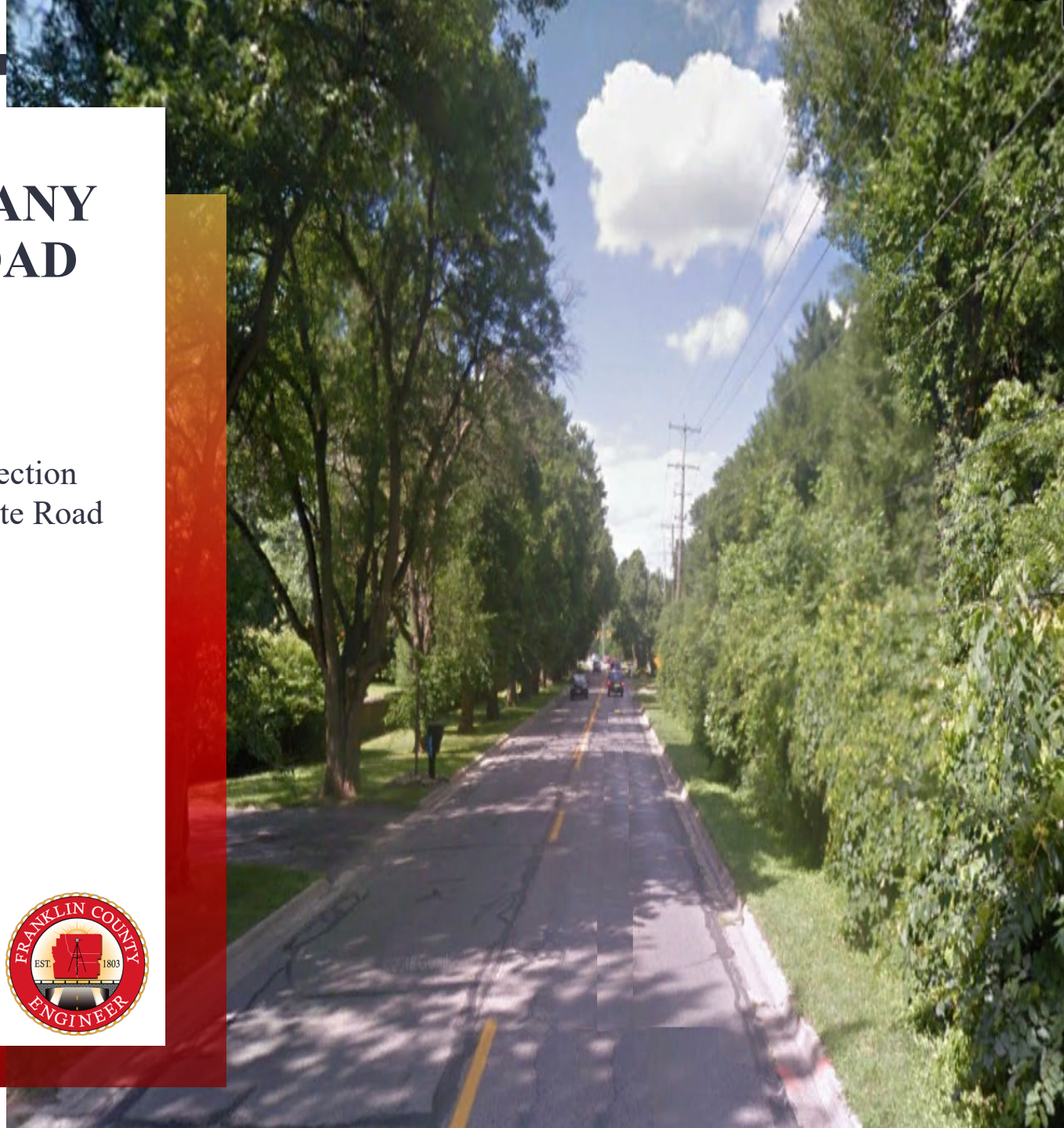
- Located in southeast Franklin County in the City of Canal Winchester
- Engineer's Estimate \$350,000
- Project Advertisement: Spring of 2020
- Construction Start Date: Summer of 2020
- Project duration: 50 days
- Maintenance of Traffic: Traffic maintained



REYNOLDSBURG-NEW ALBANY ROAD AT CLARK STATE ROAD

Site Clearing

- Located in northeast Franklin County at the intersection of Reynoldsburg-New Albany Road and Clark State Road
- Engineer's Estimate \$167,000
- Project Advertisement: November 12, 2019
- Construction Start Date: January 2020
- Project duration: January – March 2020
- Maintenance of Traffic: Traffic maintained





REYNOLDSBURG-NEW ALBANY ROAD AT CLARK STATE ROAD

Intersection Improvement

- Located in northeast Franklin County at the intersection of Reynoldsburg-New Albany Road and Clark State Road
- Engineer's Estimate: \$2,600,000
- Project Advertisement: March 2020
- Construction Start Date: August 2020
- Project Duration: 75 days
- Maintenance of Traffic: Full closure and detour



SHERIFF FACILITY DRIVING PAD

Training Facility

- Located at the Franklin County Fair Grounds
- Engineer's Estimate: \$2,500,000
- Project Advertisement: Summer of 2020
- Construction Start Date: Following the 2020 Franklin County Fair
- Project duration: 120 days
- Maintenance of Traffic: Traffic maintained





ALUM CREEK DRIVE CONNECTED VEHICLE ENVIRONMENT (CVE)

Corridor Fiber Optic Conduit Installation

- Located in southeast Franklin County between I-270 and SR 317
- Engineer's Estimate: \$1,400,000
- Project Advertisement: Winter of 2019
- Construction Start Date: Summer of 2020
- Project duration: 120 days
- Maintenance of Traffic: Traffic maintained



EUREKA, VALLEY VIEW, HIGHLAND, HARPER

R o a d w a y W i d e n i n g

- Located in central Franklin County in the Village of Valleyview
- Engineer's Estimate: \$750,000
- Project Advertisement: Summer of 2020
- Construction Start Date: August 2020
- Project duration: 60 days
- Maintenance of Traffic: Traffic maintained





QUESTIONS?





THANK YOU FOR ATTENDING!